

STATE STREET®

STATE STREET ALPHA

Data Platform

Accelerated Insights and
Streamlined Data Management

An abstract graphic consisting of several thick, curved, 3D-style lines in shades of blue and green. One prominent line curves from the bottom left towards the top right. Another line curves from the bottom right towards the top left. A third line, in a lighter blue/green shade, runs horizontally across the middle. A large white Greek letter alpha (α) is superimposed on the horizontal line.

α

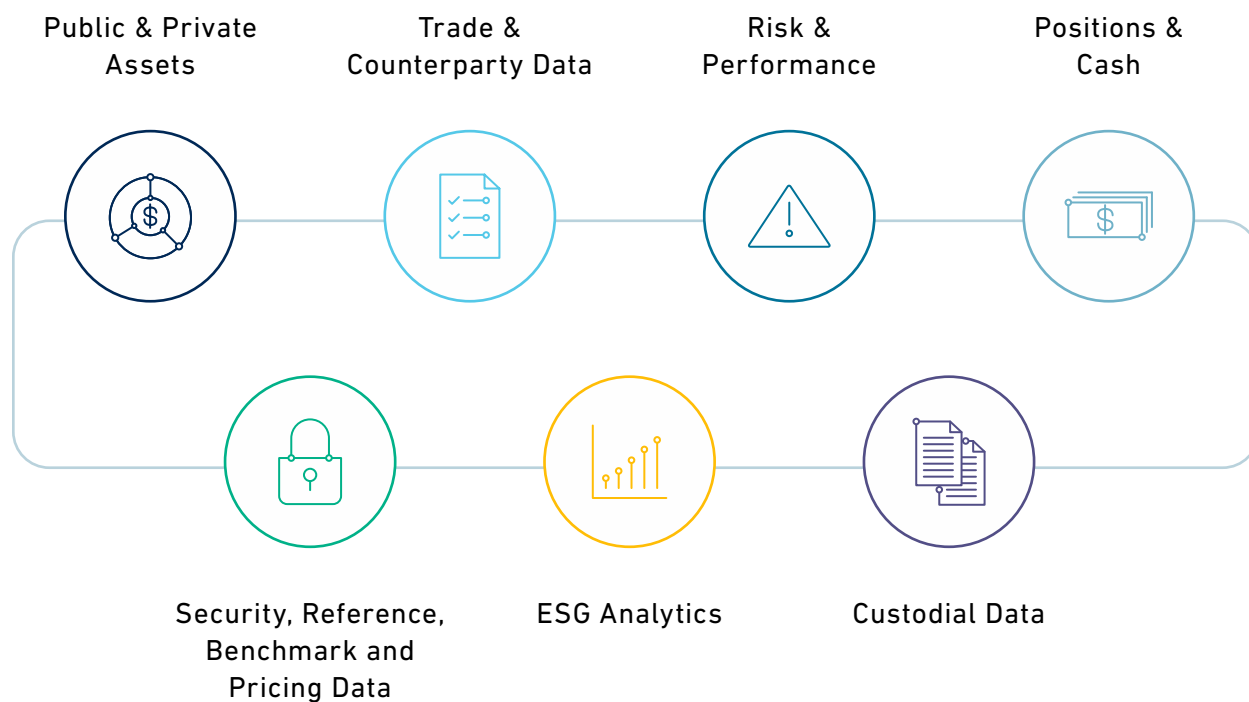
**State Street AlphaSM
Data Platform (ADP)
accelerates investment
firms' ability to take
action by making high
quality investment data
ready for consumption
when it's needed.**

Alpha Data PlatformSM unifies data management across the front, middle and back office for investment and wealth managers, asset owners and insurers. Built on the Snowflake Data Cloud, ADP helps firms capture and leverage growing data volumes and radically simplify their data operations by eliminating data silos.

Potential Benefits:

- Ensure a **single source of truth** across the enterprise
- **Faster time to insight** with self-service data visualization and analysis
- **Enrich and enhance internal data** with third party sources including the State Street and Charles River partner ecosystem and the Snowflake Data Marketplace
- **Securely share data** with internal and external stakeholders

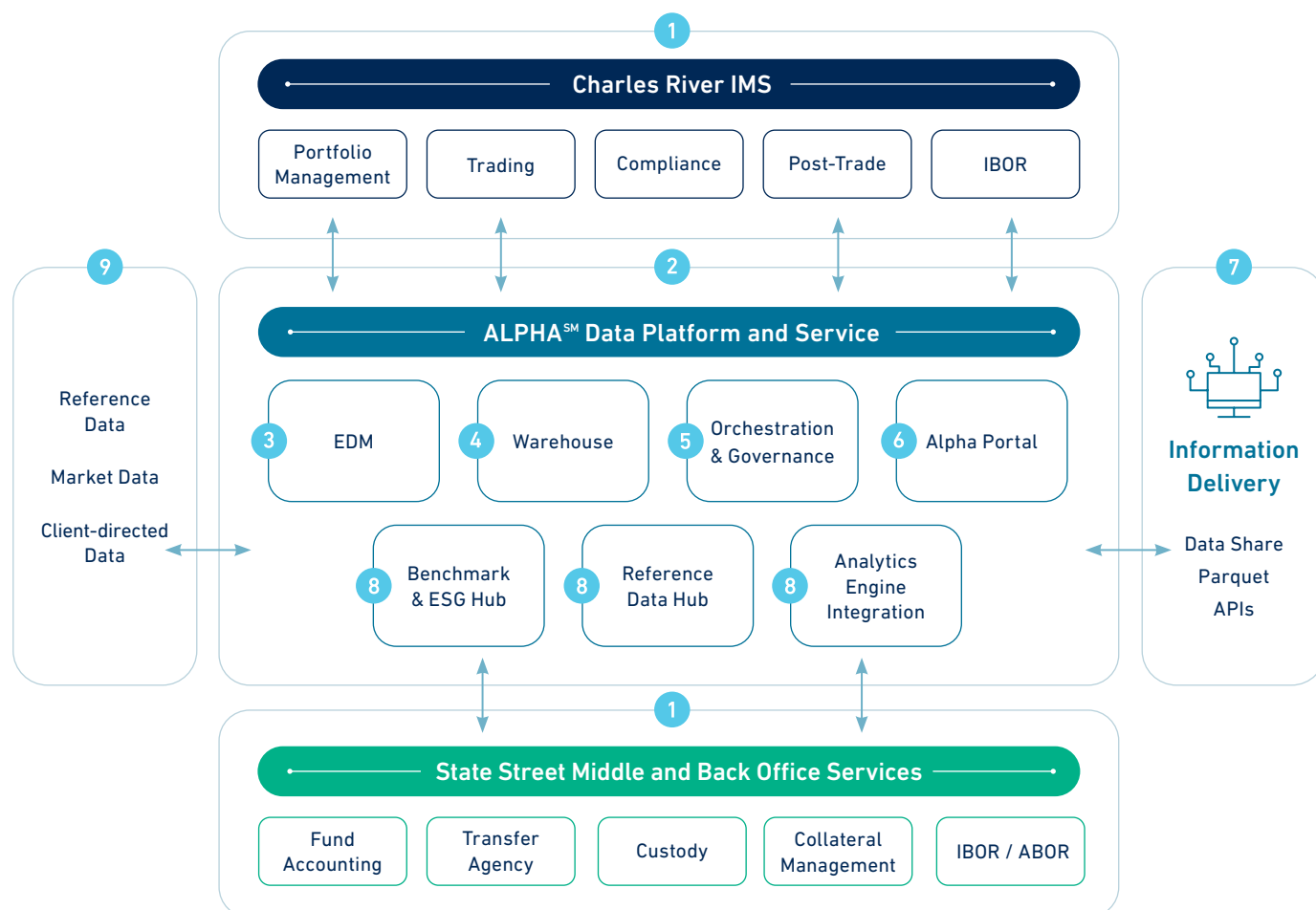
Deliver a Single, Enterprise-wide Source of Truth



Leveraging ADP Across the Enterprise

ADP helps firms capture and curate mission-critical data across their front, middle and back office. Enterprise data management (EDM) capabilities include governance, validation and mastering to ensure fit-for-purpose information is made available to internal and external stakeholders in a timely, compliant and secure manner. State Street AlphaSM and Charles River[®] clients gain a near real-time view of cash and positions, encumbered collateral and securities on loan from their middle and back office. Flexible information delivery options include dashboards, reports, extracts and API-enabled data transfers.

Illustrative Operating Model and Key Components



- 1 Industry Standard Data Model** – investment management data model covering public and private market front, middle and back-office data. State Street technology and services or other-third party providers
- 2 Outsourced Data Services** – 24/7 global team sourcing, validating, enriching, mastering and delivering your data.
- 3 Enterprise Data Management** – Enterprise data mastering and gold copy creation, leveraging artificial intelligence and machine learning
- 4 Data Warehouse** – Highly scalable, as-of / as-at capabilities, leveraging Snowflake
- 5 Orchestration and Governance** – Event-based automation and data visibility across entire platform
- 6 Alpha Portal** – Persona driven UI and business intelligence tool for reporting and analysis
- 7 Information Delivery** – Snowflake DataShare, Parquet extracts, API framework
- 8 Partner Solutions** – Fast delivery of third-party data and integration with business solutions e.g. MSCI, Axioma, Factset
- 9 Third-Party & Client Directed Data** – Source agnostic integration of additional data sets

Enterprise Data Management in ADP

Enterprise Data Management (EDM) is an integral capability in ADP, ensuring fit-for-purpose data, from creation to consumption. Automated, exception driven workflows support scalability and extensibility. Clients can opt to outsource EDM via Alpha Data Services.SM



Data Sourcing & Integration

Acquire and ingest externally provided and internally manufactured data



Curation & Validation

AI-based detection and remediation of stale, erroneous, inconsistent and missing data



Master Data Management

Domain-agnostic governance of reference, analytics and other investment data



Gold Copy Creation

Blend and promote data from multiple sources to enrich information content



Data Lineage

Maintain an audit trail of data transformations and usage patterns



Data Delivery

Distribute the right data in the right format to the right users

Supporting the Front Office with ADP

ADP enables investment professionals to access both current and historical data to gain insights, manage investment products and make timelier risk and investment decisions. A few use cases include:



Streamlining Portfolio and Risk Analytics

ADP streamlines the ingestion, curation and management of deep time series history and point-in-time views to support risk forecasting, trend analysis and scenario analysis across asset classes and portfolios. ADP provides a framework for integrating MSCI, Axioma and Factset data, as well as client-specific data sets and analytics.



A Unified view of Public and Private Portfolios

Risk officers, analysts and portfolio managers can analyze exposures, generate cash projections and risk forecasts and analyze potential scenarios across a range of economic factors. Clients can leverage self-service business intelligence and reporting tools to gain insights and integrate proprietary applications and valuation models that support their asset mix across public and private assets.



Supporting ESG-based Products

ADP provides the capabilities and technology required by ESG-integrated organizations. Firms can source, manage and curate ESG data, carbon scores and other analytics from external providers and internal sources. This helps support regulatory reporting requirements including SFDR and TCFD and enables implementation and management of core ESG investment strategies on the platform.

Accelerated Insights and Streamlined Data Management with ADP



Leverage all of your data to make better informed decisions

ADP provides a flexible, cost-effective way to capture and curate all data produced across the front, middle and back office, enriched with externally acquired data to enhance information content. Investment professionals can leverage unstructured data and deep financial time series to drive better-informed risk and allocation decisions.



Accelerate time to market

Investment managers can bring new products to market faster, underpinned by the required breadth and depth of data. ADP's in-memory data access accelerates investment strategy back-testing and helps product teams understand liquidity and capacity constraints with minimal data assembly and aggregation.



Harness a growing data ecosystem

ADP's open architecture and data sharing capabilities enable access to the Charles River and State Street ecosystem of third-party providers offering a broad range of reference, benchmark, index, pricing and ESG data. Analysts can rapidly vet and onboard new data sources from the Snowflake Data Marketplace with minimal friction.



Radically simplified data management

ADP's cloud-native technology provides firms with on-demand elasticity and scale, eliminating the need to requisition and configure hardware resources. Transparent data lineage and governance reduce costly administrative overhead and ensure fit-for-purpose data delivery across the enterprise in a timely manner.

For more information, contact:

statestreet.com/alpha

STATE STREET®

State Street Corporation
One Lincoln Street, Boston, MA 02111

www.statestreet.com

The information provided does not constitute investment advice and it should not be relied on as such. It should not be considered a solicitation to buy or an offer to sell a security. It does not take into account any investor's particular investment objectives, strategies, tax status or investment horizon. You should consult your tax and financial advisor. All material has been obtained from sources believed to be reliable. There is no representation or warranty as to the accuracy of the information and State Street shall have no liability for decisions based on such information.

The whole or any part of this work may not be reproduced, copied or transmitted or any of its contents disclosed to third parties without State Street's express written consent.

Copyright © 2023 State Street Corporation and/or its applicable third party licensor.
All Rights Reserved

5406953.1.1.GBL
Expiration date: 01/12/2024